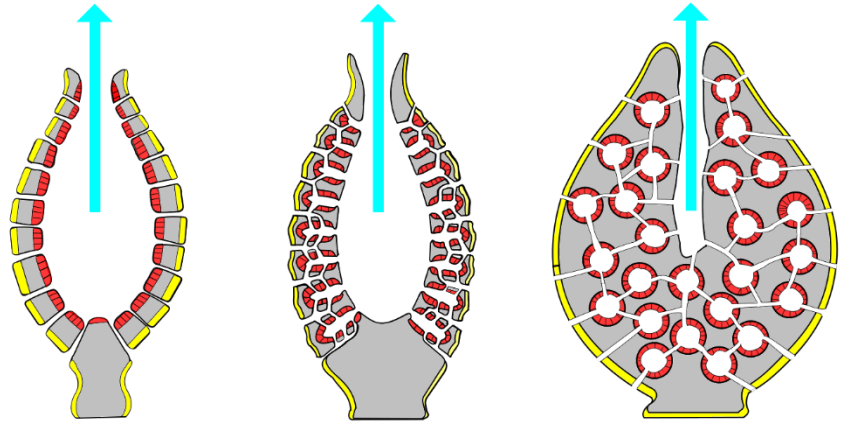


Phylum Porifera

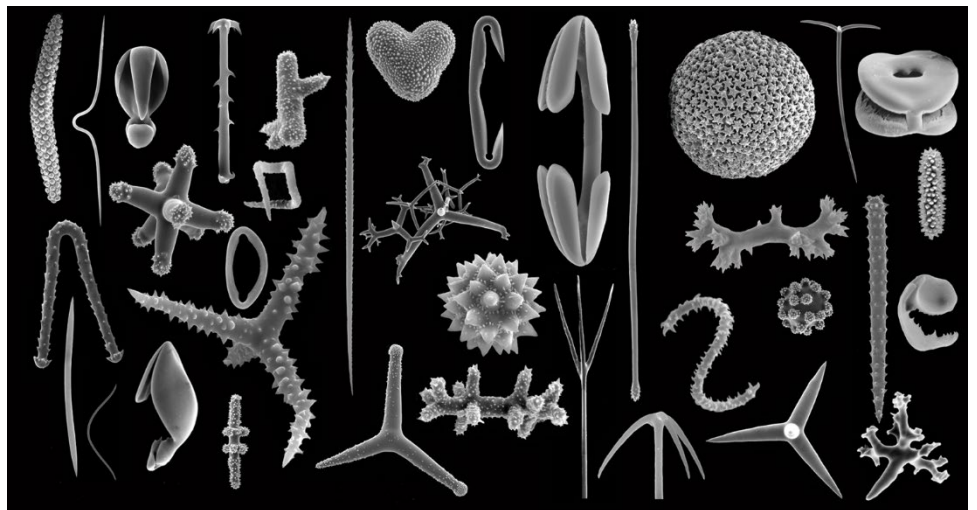
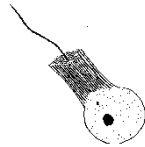


Porifera body structure.

Colour-coding: Yellow: pinacocytes; Red: choanocytes; Grey: mesohyl;
Pale blue: water flow

Structure types: Left: asconoid; Middle: syconoid; Right: leuconoid

By Philcha - Own work, CC BY-SA 3.0, <https://commons.wikimedia.org/w/index.php?curid=5100738>



By Rob W. M. Van Soest, Nicole Boury-Esnault, Jean Vacelet, Martin Dohrmann, Dirk Erpenbeck, Nicole J. De Voogd, Nadiezhda Santodomingo, Bart Vanhoorne, Michelle Kelly, John N. A. Hooper - Van Soest RWM, Boury-Esnault N, Vacelet J, Dohrmann M, Erpenbeck D, et al. (2012) Global Diversity of Sponges (Porifera). PLoS ONE 7(4): e35105. doi:10.1371/journal.pone.0035105, CC BY 2.5, <https://commons.wikimedia.org/w/index.php?curid=34595288>

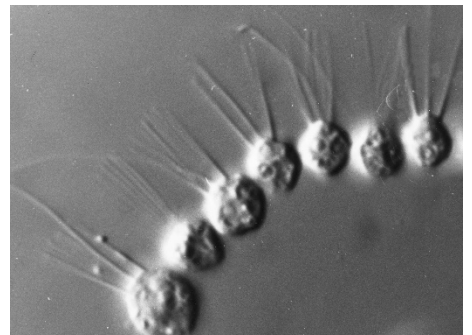


By Alcinoe at English Wikipedia - Own work by the original uploader, Public Domain, <https://commons.wikimedia.org/w/index.php?curid=56733276>

Solitary choanoflagellate at left and a small colony of choanoflagellates at right. Their structure and behaviour link them to the ancestors of the sponges, and thus, the ancestors of all animals.



By Daniel Stoupin - http://www.choano.org/wiki/Choanoflagellate_Gallery#Codosiga_sp._Gallery, CC BY-SA 3.0, <https://commons.wikimedia.org/w/index.php?curid=17880698>



By Sergey Karpov - http://www.choano.org/wiki/Choanoflagellate_Gallery#Desmarella_moniliformis_Gallery, CC BY-SA 3.0, <https://commons.wikimedia.org/w/index.php?curid=17880584>